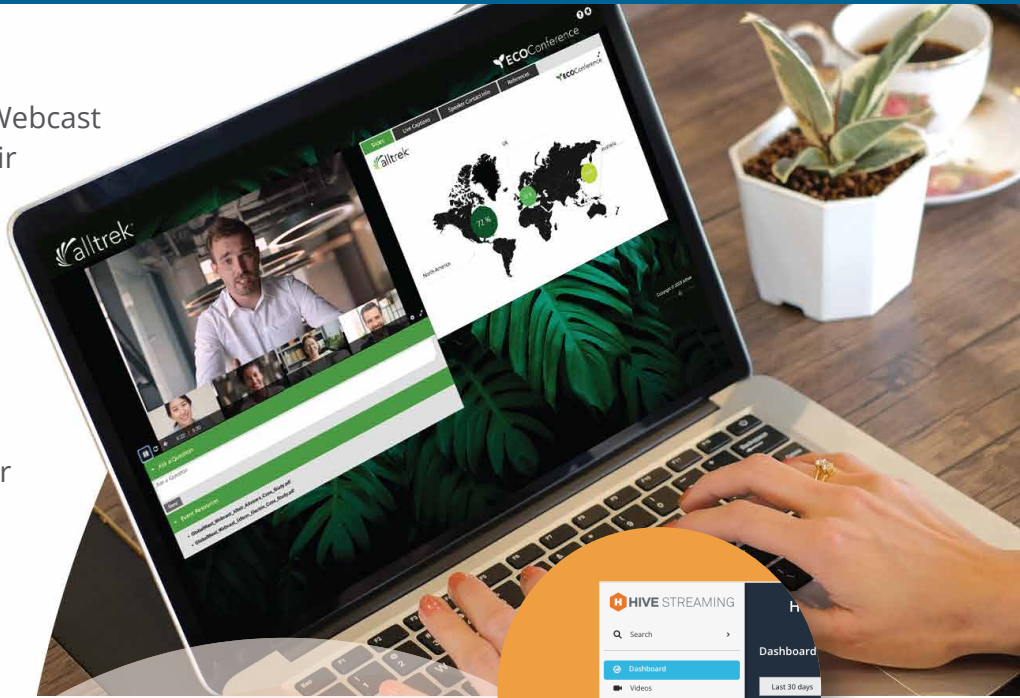


Discover the joint power of GlobalMeet Webcast Webcast's integration with Hive Streaming.

Joining forces with Hive, GlobalMeet Webcast helps clients maximize the ROI of their internal video communications.

The return to the office doesn't mean a return to audio. The use of live video for high quality interactive virtual events has exponentially grown over the past two years.

Now, as companies prepare for their employees and virtual audiences to return to the office, they need a solution to help optimize video and attendee experience.

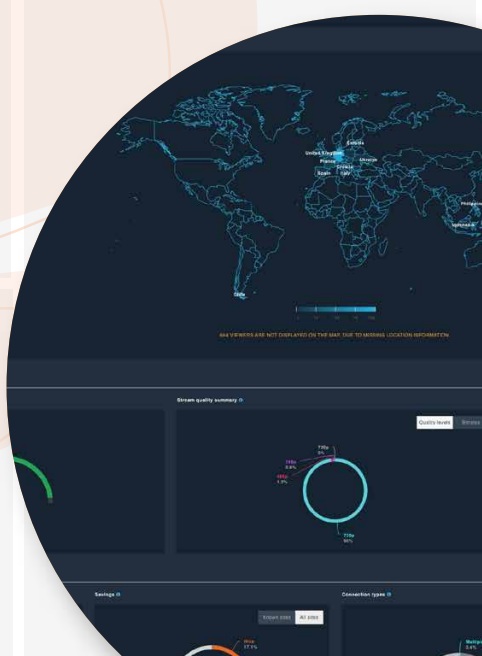


GlobalMeet Webcast integrates seamlessly with the Hive streaming solution providing **significant bandwidth savings** and up to **99% network offload of video consumption**.

Experience and Technology Matters

- GlobalMeet Webcast has 20+ years delivering virtual events and Hive 15+ years ensuring an optimal experience.
- Ensure a seamless high-quality video experience when delivering your corporate internal communications, streamlining the entire process.
- Easy implementation and configuration, no installation needed, so you can focus on what matters.
- Access real-time insights and metrics into employee engagement to measure and improve your communications strategies.
- Enjoy a consistent technology experience for events of all sizes and types - small and big, live or on-demand.

Gain additional metrics and streaming information through GlobalMeet Webcast's integration to Hive.

	BEFORE AN EVENT	DURING AN EVENT	AFTER AN EVENT
Analytics	<p>Insights Analyze a wide array of KPIs to determine the success of similar events you've held in the past and gain insights into how you can guarantee success for your next stream.</p> <p>Hive Video Intelligence* Better understand emerging trends around video consumption and adoption rates.</p>	<p>Live monitor Track and monitor your most important KPIs in real time. Live stream alert center helps you visualize your key metrics to identify any problems.</p>	<p>Insights Dig into the details of your stream's performance. Here, you can view quality of experience, bandwidth savings, viewers over time, and more.</p> <p>Executive Dashboard Easily export a summary of the most powerful insights to your non-technical audiences like the organization's leadership.</p> <p>Engagement Indicators* Understand how your audience is interacting with your video event and measure their engagement. This premium extension of the Executive Dashboard measures engagement over time, in-office versus at-home viewer engagement and more.</p>
Operations	<p>Silent Testing Simulate your video event stream ahead of time to all devices on your network without anyone noticing, thanks to the Hive Agent.</p>	<p>Stream safety Viewer data is anonymized, and nothing passes through Hive, ensuring a secure stream.</p> <p>Stream health Real-time health monitoring identifies issues the moment they happen, allowing you to ensure the integrity of every stream.</p>	
Optimization	<p>Multi-platform support Hive powers most major enterprise video platforms.</p>	<p>Extended buffer Lessen load times for more seamless streaming with intelligently calibrated buffering.</p> <p>CDN pre-fetching Ensure quality streams with low bandwidth loading due to pre-fetched video segments.</p> <p>Congestion control Identify where network load is impacting the stream's reach and address any server blockage issues.</p>	

* Premium Add-On

Sign up today for a demo of GlobalMeet Webcast with Hive.

www.globalmeet.com